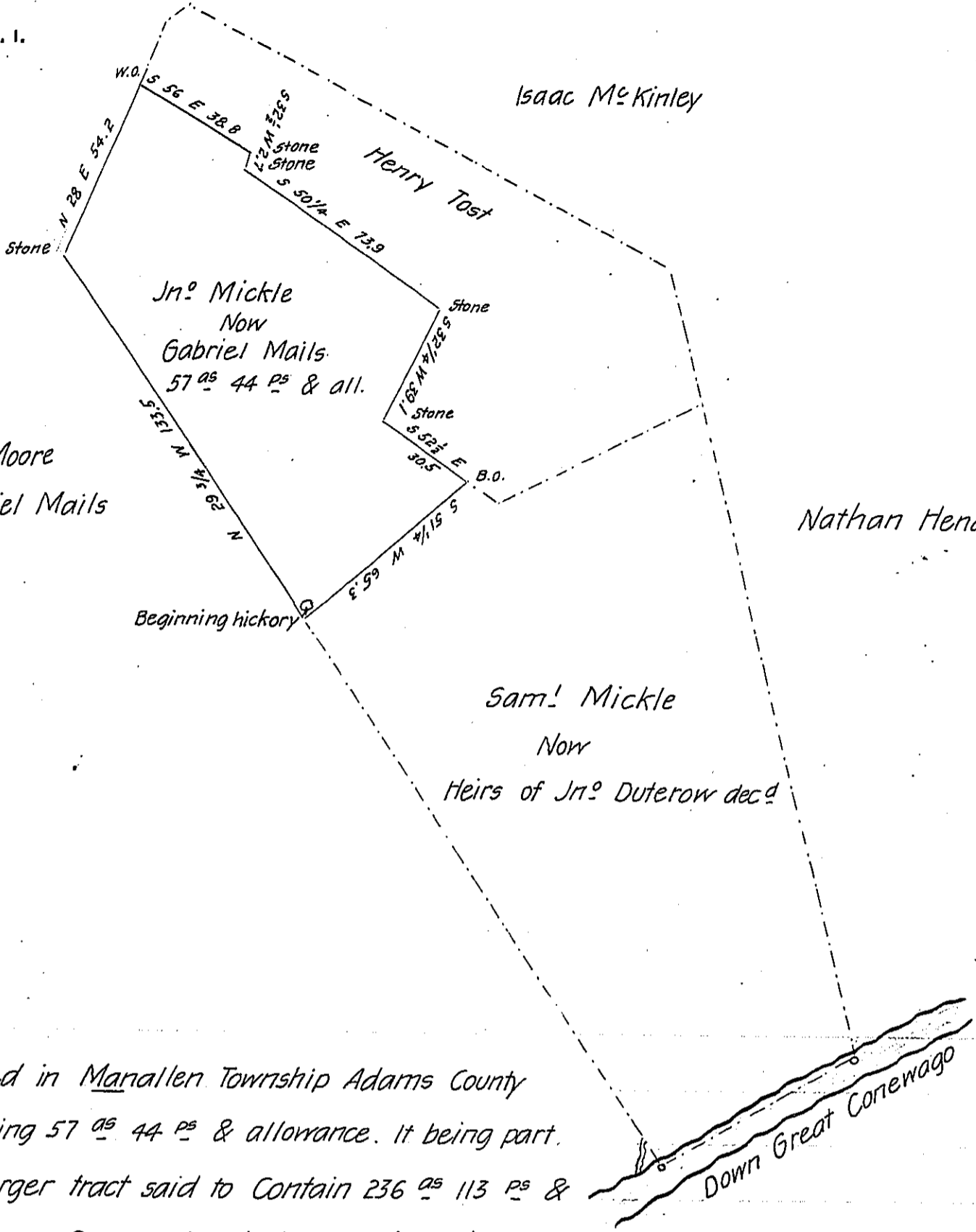


FORM No. 1.

Sam! Gilleland

Isaac McKinley



Robt Moore  
Now Gabriel Mails

Nathan Hendriks

Sam! Mickle  
Now  
Heirs of Jr. Duterow decd

Situated in Marallen Township Adams County  
 Containing 57 <sup>as</sup> 44 <sup>ps</sup> & allowance. It being part  
 of a larger tract said to contain 236 <sup>as</sup> 113 <sup>ps</sup> &  
 allowance. Surveyed 16<sup>th</sup> day of November 1791 by Moses McClean D.S.  
 In pursuance of a Warrant to John Mickle for 200 <sup>as</sup> dated 30<sup>th</sup> of Nov-  
 ember 1742 Surveyed and divided from the residue October 14<sup>th</sup> 1839 for  
 Gabriel Mails

By

Ja<sup>s</sup> Boyd D.S.

To Jacob Sallade Esq<sup>r</sup>  
Surveyor General

IN TESTIMONY that the above is a copy of the original remaining on file in  
 the Department of Internal Affairs of Pennsylvania, made  
 conformably to an Act of Assembly approved the 16th day of  
 February, 1833, I have hereunto set my Hand and caused  
 the Seal of said Department to be affixed at Harrisburg,  
 this eighteenth day of April 1906

*Loaco Brown*  
 Secretary of Internal Affairs.